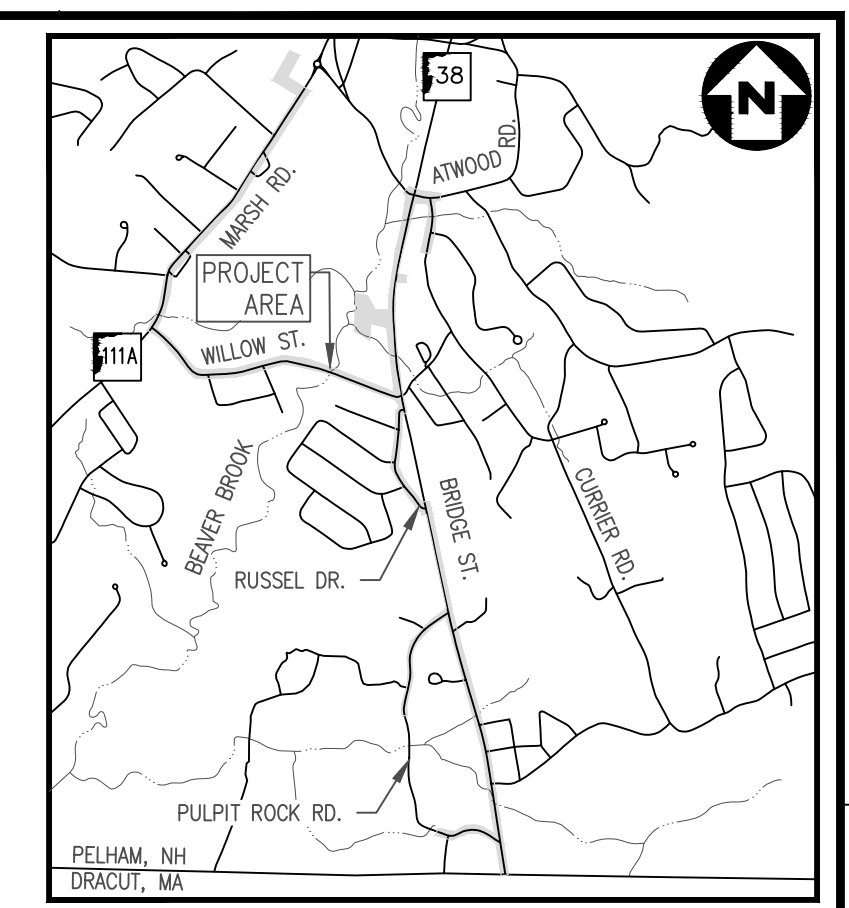
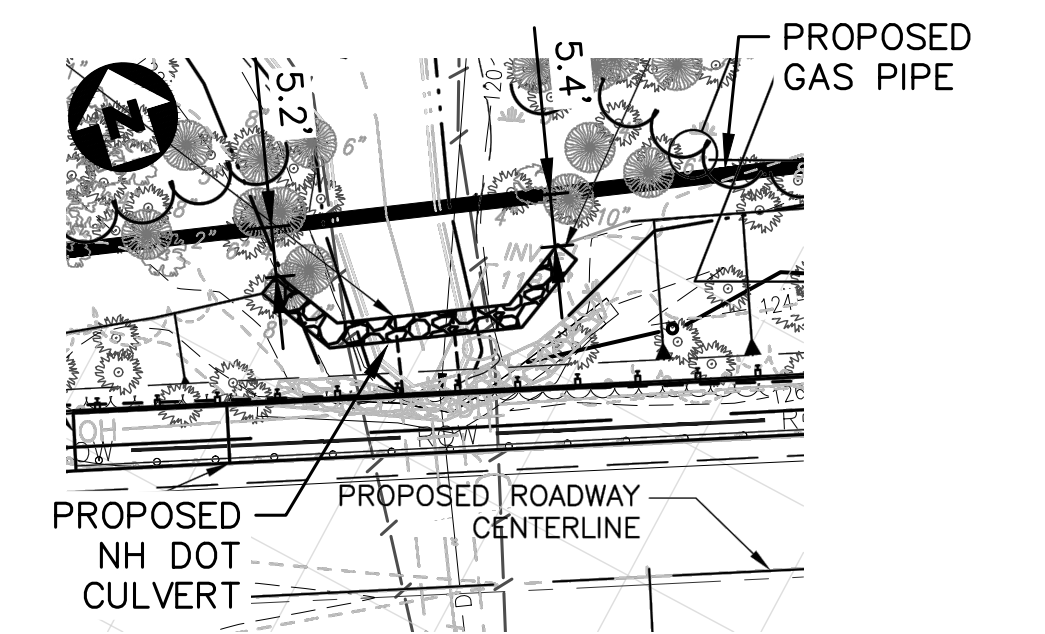


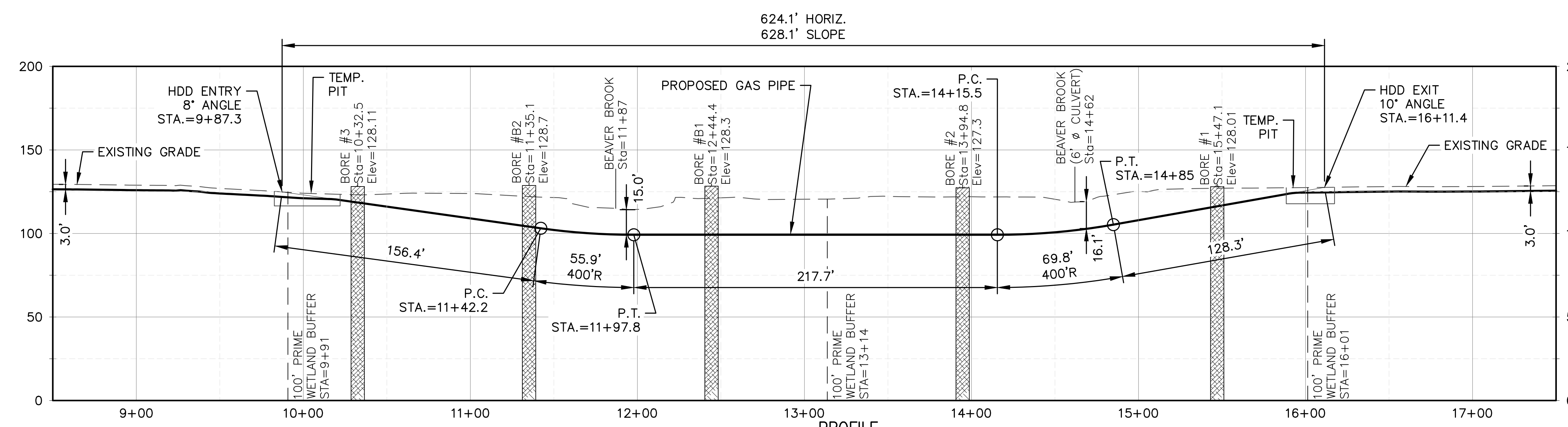
PLAN
SCALE: 1"=40'



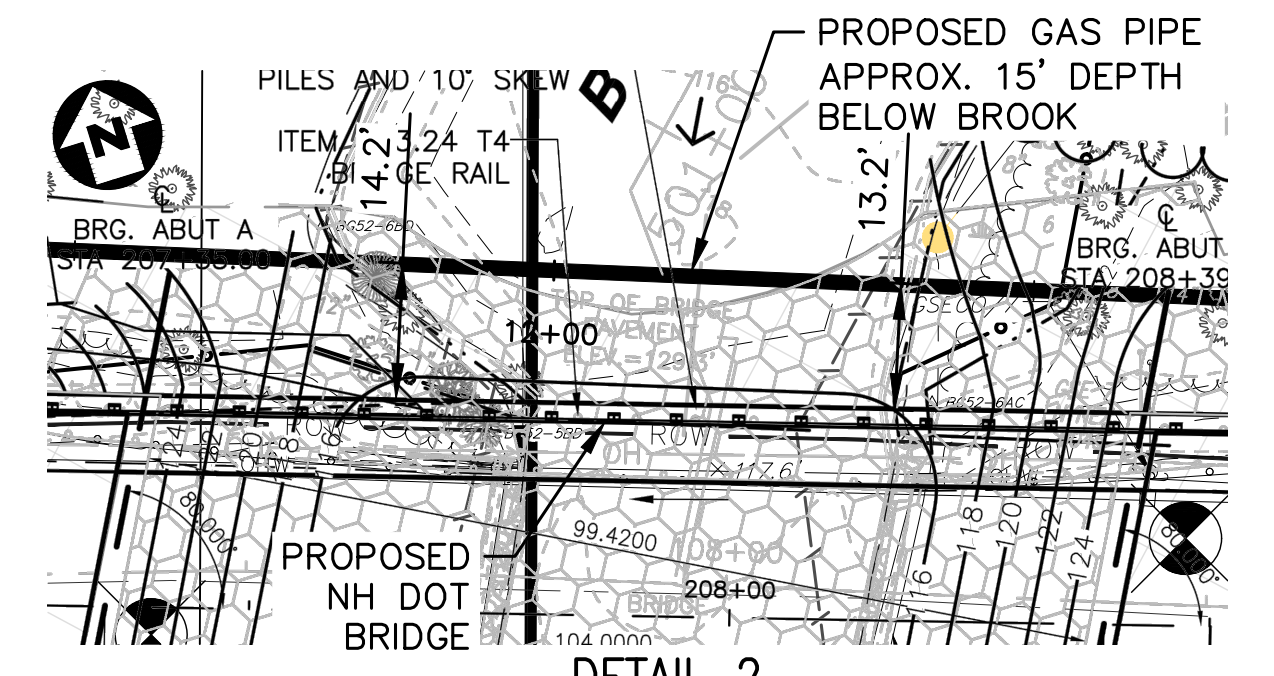
LOCATION MAP
(N.T.S.)



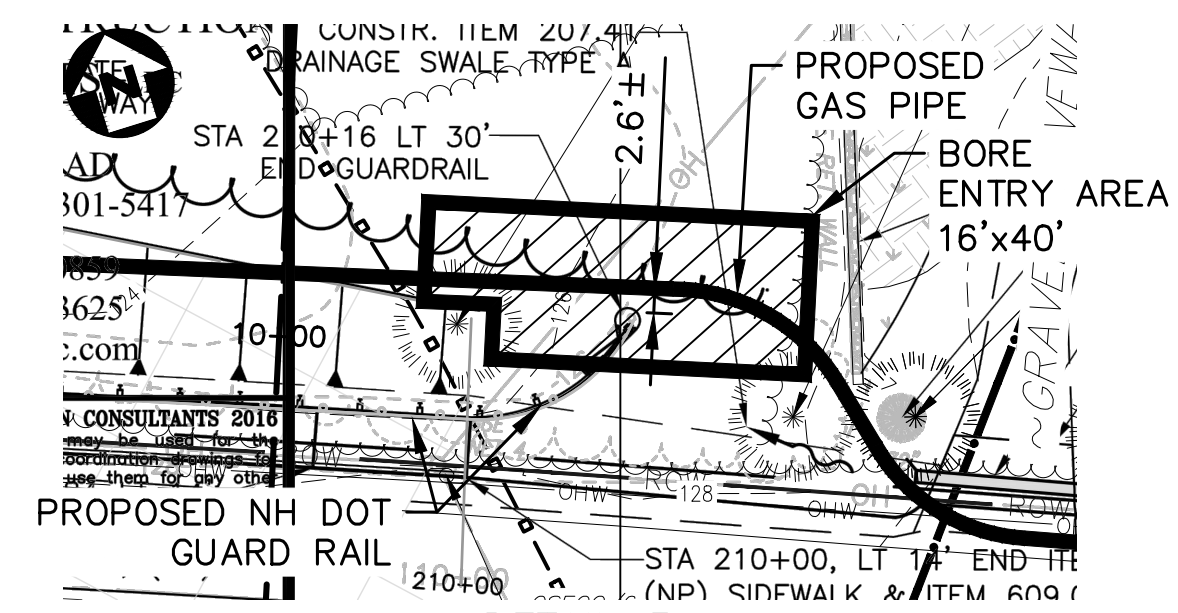
DETAIL 1
SCALE: 1"=20'



PROFILE
SCALE: 1"=40'H
1"=40'V



DETAIL 2
SCALE: 1"=20'



DETAIL 3
SCALE: 1"=20'

NOTES:
WETLANDS WERE DELINEATED BY NORMANDEAU ASSOCIATES, INC. BETWEEN APRIL 21 AND MAY 1, 2017. THE WETLAND DELINEATIONS WERE COMPLETED IN ACCORDANCE WITH THE CRITERIA DESCRIBED IN THE U.S. ARMY CORPS OF ENGINEERS WETLAND DELINEATION MANUAL TECHNICAL REPORT Y-87-1 (JANUARY, 1987) AND THE REGIONAL SUPPLEMENT FOR THE NORTHCENTRAL AND NORTHEAST REGION (JANUARY, 2012) AND MEET THE CRITERIA FOR WETLAND DELINEATION IN ACCORDANCE WITH THE NH DES ADMINISTRATIVE RULES ENV-WT 301.01.

PROPRIETARY & CONFIDENTIAL
Copyright - CHI Engineering Services, Inc. 2017
THIS DOCUMENT CONTAINS DETAILED DESIGN INFORMATION, WHICH IS CONFIDENTIAL, PROPRIETARY, AND SUBJECT TO COPYRIGHT, TRADE SECRET AND OTHER INTELLECTUAL PROPRIETARY PROTECTIONS.

PRELIMINARY

NOTE:
BORE DESIGN IS PRELIMINARY. BORES NEED TO BE DETAILED WITH SOIL INFORMATION, PROPERTY OWNER ASSESSMENTS IN PROGRESS AND HD DRILLER NEEDS TO REVIEW AND COMMENT.

PROJECT DESCRIPTION:
LIBERTY UTILITIES HAS CONTRACTED CHI TO DESIGN AN EXPANSION TO THEIR GAS DISTRIBUTION SYSTEM IN THE TOWN OF PELHAM, NH. AS PART OF THIS DESIGN, LIBERTY PROPOSES TO PERFORM A HORIZONTAL DIRECTION DRILL UNDER THE BEAVER BROOK ON WILLOW STREET IN PELHAM.

BY	CHKD	DATE	BY	PPS	PRELIMINARY ISSUE FOR PERMITTING
CHKD	CTM	DATE	4/28/2017		
REVISIONS		DESCRIPTION		DESIGN APPROVAL	

DOUCET SURVEY
Serving Your Professional Surveying & Mapping Needs
102 Kent Place, Newmarket, NH 03857 (603) 659-6560
2 Commerce Drive (Suite 202) Bedford, NH 03110 (603) 614-4060
10 Storer Street (Riverview Suite) Kennebunk, ME (207) 502-7005
http://www.doucetsurvey.com

CHI ENGINEERING
the experience to innovate
PROPRIETARY & CONFIDENTIAL
Copyright - CHI Engineering Services, Inc. 2017
THIS DOCUMENT CONTAINS DETAILED DESIGN INFORMATION, WHICH IS CONFIDENTIAL, PROPRIETARY, AND SUBJECT TO COPYRIGHT, TRADE SECRET AND OTHER INTELLECTUAL PROPRIETARY PROTECTIONS.

LIBERTY UTILITIES
PELHAM GAS EXPANSION
15 BUTTRICK ROAD
LONDONDERRY NH 03053

PROJ NO :	LIBE17012.00
BY :	PPS
CHKD :	CTM
DATE :	5/1/2017
PROJECT MANAGER	
ENGINEERING SUPERVISOR	

TITLE:	CIVIL - Misc	
	PROPOSED HORIZONTAL DIRECTIONAL DRILL UNDER BEAVER BROOK	
DWG NO :	6	REV.
SCALE :	AS NOTED	SHT :
		6
		A

FILE PATH: H:\LIBE\17012.00 Pelham Gas Expansion Design\CSID CAD\Production Drawings\c06-01.dwg PLOT DATE/TIME: 05/15/17 15:20 PLOT BY: PATRICK P. SAMPSON

